



IAMGOLD Corporation

Saramacca Gold Mine

Suriname

Scope of Work

Sap2 waste Rock drains (Reach 5 and 6)

August 24th, 2022

FOR TENDER

Do not use for construction

Prepared by: Prachal Mahabier

Approved by: Suradj Mohan



Saramacca Gold Mine

Scope of Work

Sap2 waste Rock drains (Reach 5 and 6)

REVISION HISTORY

Revision	Document Status – Revision Description	Date

TABLE OF CONTENTS

1. General	1
2. Work included.....	2
3. Work excluded.....	3
4. Other inclusions and requirements.....	3
5. Equipment required by Contractor, as a minimum, to the complete scope of work:	4
6. QUALITY REQUIREMENTS.....	4
7. Responsible department.....	4
8. HEALTH & SAFETY	5
9. site Schedule.....	5

1. GENERAL

IAMGOLD is currently developing a gold mine pit in Saramacca located in Suriname, South America, approximately 100 km southwest of the capital city of Paramaribo and 25 km from the Rosebel Gold Mine mining facility (RGM). RGM holds a 70% interest in the Saramacca gold project (IAMGOLD's effective interest is 66.5%).

The development of the Saramacca pit and its associated infrastructures are fundamental to Rosebel Gold Mines. It is therefore of greatest importance to bring this project online as quickly, safely and within budget as possible. The associated infrastructures includes rock drains that are meant to decrease risk for initiation of a possible deep-seated instability of the Waste Dump in Saramacca.

Rock drains are critical infrastructures that decreases risk of initiation of a possible deep-seated instability event, this because it transmits base & peak flows without compromising the stability of the dump. As the dump material is soft saprolite and because the dump is in a high slope area, the water under the dump must be managed.

Location

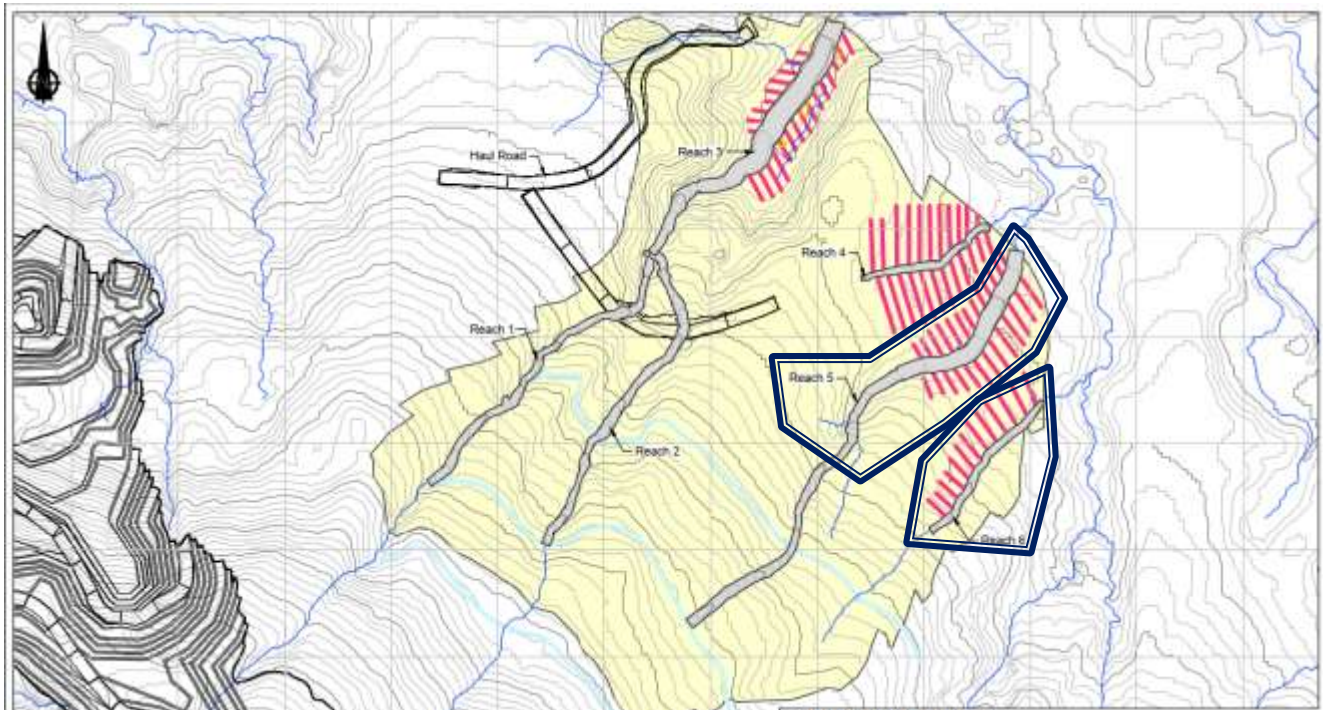
Location for the base of the contract will be at IAMGOLD Rosebel Gold Mines, Saramacca-Mine site



2. WORK INCLUDED

The planned work includes the following:

- Construction of reach 5 and 6
- Sections circled in dark blue is the scope of this RFQ



- Construct as to the attached Design, SRK, SAP2 20220414 rock drain, following with the finger-drains
- The following lengths to be constructed(main drain):
 - Reach 5 is 686 m. (from St. 0+800 to St.1+486)
 - Reach 6 is 410m.
- SRK and/or RGM field Engineer will have oversight and approval authority at different stages of construction, there should be no delays to contractor.

2.1 Manpower, transportation and accommodation

- Transportation to and from Saramacca will be provided by the contractor
- Accommodation will be sourced and arranged outside of the Rosebel concession by the contractor.
- Manpower shall include operators, mechanics, safety officers and related service personnel.

2.2 Materials supply

Materials quantities are indicated in the attached drawings.

- Proper barricades, signs to divert Light vehicle traffic, heavy equipment and public traffic, sufficient light towers for the nightshift, water truck for adequate dust control.
- Earth moving equipment to be specified by the contractor.
- Pit rock will be provided by RGM and to be loaded and hauled by the contractor from Mayo waste dump.
- Rip Rap (Clean Drain Rock) will be provided by RGM and to be hauled by the contractor from the Baitali aggregates plant at Mayo waste dump.
- Geotextile will be provided by RGM and to be collected by the contractor from Mayo Laydown.
- SOW to be completed by end of October 2022; Provide with counter-proposal if before mentioned completion is not achievable.

3. WORK EXCLUDED

The following items are excluded from the scope of work:

- Surveyor to confirm locations and elevations for Asbuilt drawings at the end of each section of Rock drain.
- Each section will be handed over to operations as it is completed and found acceptable by SRK/Client.

4. OTHER INCLUSIONS AND REQUIREMENTS

- The contractor is responsible for providing all equipment and manpower required for the completion of the aforementioned works.
- The Contractor is responsible for providing and maintaining equipment and tools required for the scope of work.
- The Contractor need to provide 2 teams (Day-and night shift)/ 12 hours shift
- The Contractor is required to report man-hours and linear length complete each shift.

5. EQUIPMENT REQUIRED BY CONTRACTOR, AS A MINIMUM, TO THE COMPLETE SCOPE OF WORK:

- Light plants for 24hr work cycle
- All excavation equipment, trucks (ADT'S), dozer, compactors etc. that the contractor requires to complete this SOW.

6. QUALITY REQUIREMENTS

Quality Assurance (QA)

- The Contractor will ensure that the Quality of work performed complies with the requirements and standard approved by the Client or the Client's representative.

Quality Control (QC)

- All work will be completed in a manner consistent with accepted standards of professional practice. In accordance with RGM Capital Projects - Construction Superintendent

7. RESPONSIBLE DEPARTMENT

Personnel provided will be under responsibility of RGM Capital Projects department. Direct supervision will be under Capital Projects - Construction Superintendent.

Field Supervisor / Jr. Engineer / oversight Jo Vola +5977109100

Field Supervisor / oversight Iwan Heuvel Van Den +5977432070

Field Supervisor / oversight Steve Chin A Foeng +5977271521

Field Superintendent Suradj Mohan +5978281010

Health and safety advisor Milano Komsasi +5978260019

Health and safety advisor Jurgen Nelson +5978972919

Contractor will provide a similar list to the capital Projects team.

8. HEALTH & SAFETY

Below are requirement that contractors working at Rosebel Gold Mines must adhered to.

Contractor will abide by all applicable Rosebel policies, most notably the Occupational Health, Safety & Environment Policy and Procedures (including any measures related to COVID-19 prevention);

Contractor will abide by Surinamese laws and regulations;

Contractor will comply with public roads traffic regulations and have proper signage of work area;

Police clearance must be provided prior to coming to site for all contractor's working on site;

Medical screening from HCCO - Human Capital Care Outsourcing must be provided for all contractor's working on site.

Proof of SOR insurance (original name list from the insurance company).

All contractors will receive the RGM site induction.

Valid defensive driving license for driving on site.

9. SITE SCHEDULE

The Contractor will develop and submit with their proposal a detailed work schedule identifying the sequence of activities to be performed and an overall completion date not later than **September 12th, 2022**. Provide with counter-proposal if before mentioned completion is not achievable. The schedule will indicate whether the work will be formed solely on day shift or on day shift and night shift. In the event that night shift work is required in order to meet the planned completion date, the Contractor will provide the necessary equipment required to facilitate night work (ex. Light plants).

The schedule will also identify manpower requirements to complete the work.