

**Request for Quotation (RFQ)  
For the service provision of**

**[RH (East) dump expansion and SSM  
Relocation]**

**Ref [2021\_RO\_F\_PRC\_010.1]**

Issue Date: June 28, 2021

Closing Date: July 9, 2021/ 15:00

**ORFEO STIJFMEYER**

Category Management Specialist  
Rosebel Procurement & Logistics

Rosebel Gold Mines N.V

Mine Site, Brokopondo, Suriname

Tel. +597 422741 Ext. 212234

M: +(597) 8260015

[www.iamgold.com](http://www.iamgold.com)

[Orfeo\\_Stijfmeyer@iamgold.com](mailto:Orfeo_Stijfmeyer@iamgold.com)

## CONTENTS

- 1 Specification
  - A General Requirements
  - B Background to business requirement
  - C Technical Specification
- 2 Reference documents
- 3 Bill of Quantities

## A GENERAL REQUIREMENTS

Quotations are invited for the bush clearing to provide room for the Royal Hill West dump expansion and the modification of the of the Small Scale miners (SSM's) infrastructure.

The company's detailed requirements are defined in the Technical Specification.

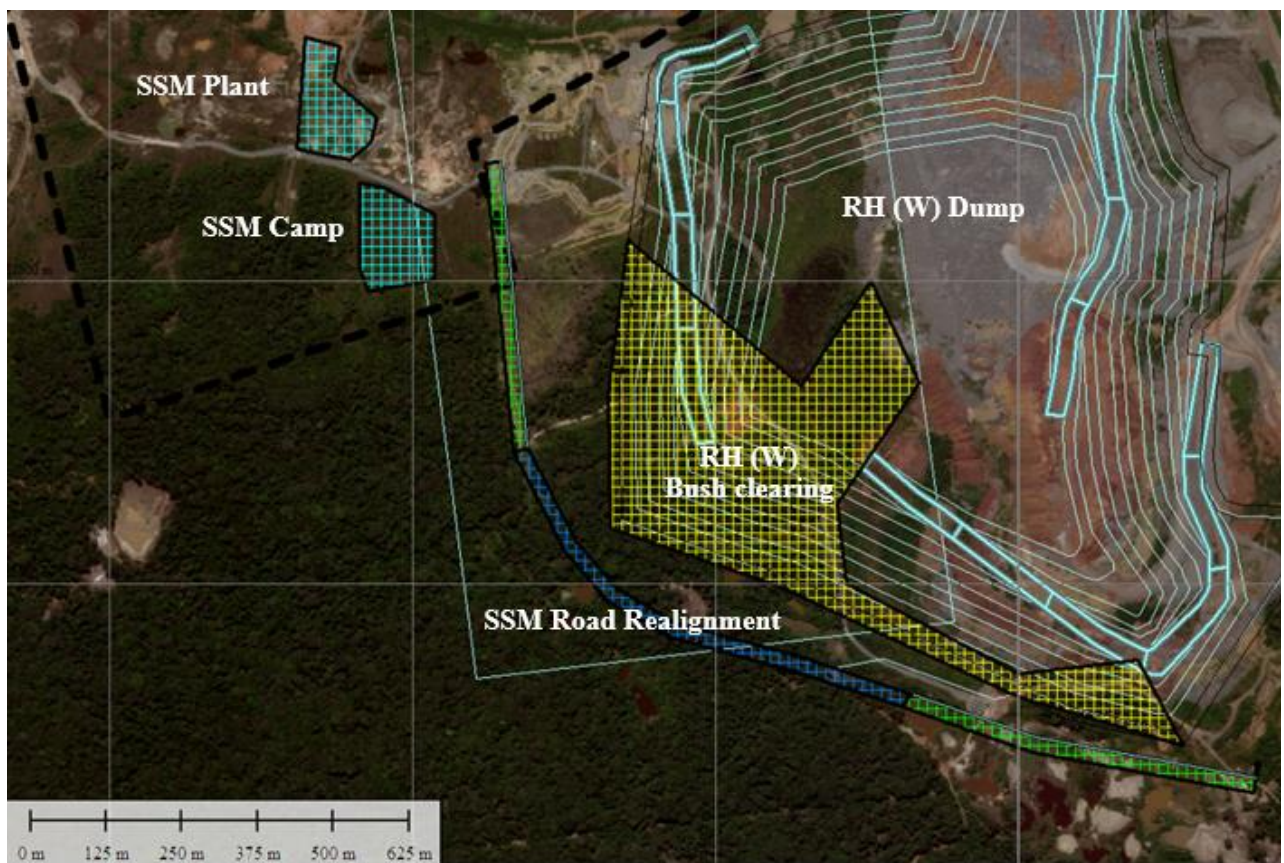
## B BACKGROUND TO THE BUSINESS REQUIREMENT

Mining of the Royal Hill pit, has resulted in an immediate expansion of the Royal Hill West dump, which ultimately encroaches on the SSM operation in Roma East.

The Roma (East) Pit location has been occupied by SSM's for a number of years, with the location officially provided to the SSM's by lamgold back in 2017. The SSM's have been mining this deposit prior to 2017 and continue to present day.

Given the proximity of the Roma (East) pit to the Royal Hill (west) dump, there is a requirement to move the main access road running NW-SE and provide an alternative location to the proposed SSM plant and camp.

**Figure 1 – Overview of the dump expansion and proposed facility changes**



The scope of this work is to include the following;

1. Bush clearing to ensure expansion of the RH dump, SSM road relocation and facility areas.
2. Construction of the main SSM road between the proposed relocation of the SSM camp and the south side of the Royal Hill pit tie-in, so the SSM's are able to access in and out of the required Roma East pit.
3. Placement of a culvert throughout a single road crossing will have to be completed. Details of design to follow (Appendix, Section 4B).

## **C TECHNICAL SPECIFICATION**

### **Bush clearing:**

To be carried out with hand help equipment for the larger trees and bush clearing machinery for both the felled trees and the main scrub clean up. The bush clearing will have to progress initially from the east to west, to ensure the RH waste dump has sufficient room to aid mining. The bush clearing for the road construction will also have to be priority to ensure the road construction can take place. Total areas can be found in the BOQ section of this document. Bush clearing areas are provided in the Appendix section 4. .

### **Road construction:**

The main road alignment will require earthworks at specified locations, followed by capping throughout. Given the nature of this construction, the earthworks will be carried out, using whatever material is available locally. This will be supplemented by suitable (likely pit rock) material from the RH dump will be hauled in to raise the road to the recommended design elevation.

QA/QC will be carried out at regular intervals, to ensure the project specifics are carried out in accordance with the specifics that have been highlighted in this document.

### **Culvert:**

Throughout the road alignment, there is a single 1 x 2 meter diameter culvert. The culvert invert elevation is to be determined, but the culvert will require a minimum of 1.5 meter coverage above the culvert structure. Details of the recommended culvert installation are provided in the Appendix (section 4).

There may be some smaller crossings that require pipes to allow the surface water to navigate the watershed, but these will be placed on an ad-hoc basis, depending on the total watershed disturbance from SSM's.

## 2 REFERENCE DOCUMENTS

### **RGM Policies:**

In addition to the services outlined in the specification, the Contractor shall comply with all policies and codes of practice, which can be found in the following locations;

### **Health and Safety:**

HR requirements:

- Police clearance for all contractor's working on site
- Medical screening from HCCO - Human Capital Care Outsourcing
- Proof of SOR insurance for all contractors working on site

Health & Safety requirements:

- General induction should be completed
- All mobile equipment; light vehicles and operators should comply with RGM Mobile Equipment standard;
- Contractors should adhere to the IAMGOLD golden rules and Core Safety Values

### 3 – BILL OF QUANTITIES

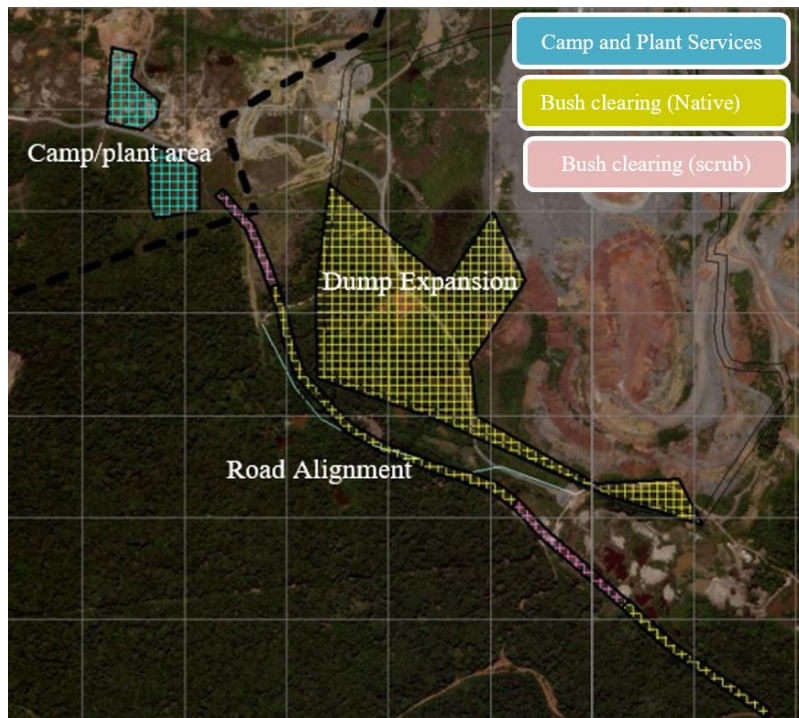
The costs should be broken down into components with a full description of each component and its associated costs. Quantities and distances are subject to change.

#	Item Description	Unit	QTY	Rate	Total	Comment
<b>1</b>	<b>RH (W) dump expansion and SSM Relocation</b>					
<b>1.1</b>	<b>Technical</b>					
1.1.A	Design	hr	0		0	RGM to Provide
1.1.B	Surveying	hr	0		0	RGM to Provide
<b>1.2</b>	<b>Bush clearing</b>					
1.2.A	Bush clearing (native jungle)	Ha	24			
1.2.B	Bush clearing (scrub)	Ha	4			
<b>1.3</b>	<b>Road Construction</b>					
1.2.A	Earthworks (dozing/levelling)	m <sup>3</sup>	9500			Roadway
1.2.B	Excavation and loading base material (RH waste dump - 1km)	m <sup>3</sup>	9500			RH Waste dump
1.2.C	Hauling and dumping of waste material (RH dump to road - 1km)	m <sup>3</sup>	9500			
1.2.D	Placing, levelling, compacting and grading of base material	m <sup>3</sup>	9500			
1.2.E	Loading and hauling of capping material (2.5km) - ELRUS	m <sup>2</sup>	5700			
1.2.F	Placing, levelling, compacting and grading of base material	m <sup>3</sup>	5700			Placing, levelling and compacting
<b>1.4</b>	<b>Culvert Installation</b>					
1.4.A	Excavate channel	m <sup>3</sup>	150			
1.4.B	Place 2 x 36 inch culverts	Cost	2			
1.4.C	Fill with 100m <sup>3</sup> of 16 - 25mm	m <sup>3</sup>	100			
1.4.D	Backfill above pipe zone	m <sup>3</sup>	50			
	<b>Sub-Total</b>					
<b>2</b>	<b>General &amp; Administrative</b>					
2.1	Mobilization Costs					
2.2	Administrative Cost					
2.3	Extra/Over					
<b>3</b>	<b>Total</b>					

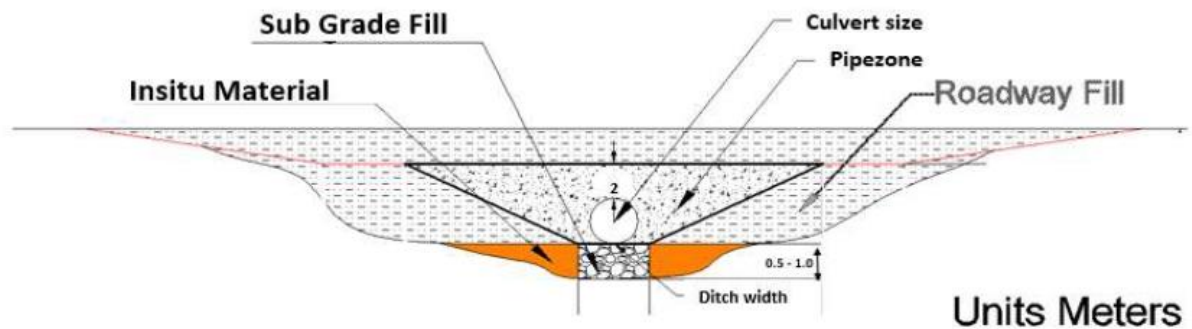
**4 – APPENDIX**

The following figures show the steps and progression of installation:

**A. Total bush cutting areas:**



**B. General install section of primary Culvert install**



*Note: The above culvert install is for reference purposes. The culvert design diameter is 2m and the culvert coverage is minimum 1.5 meter. The invert elevation is to be determined.*