

SCOPE OF SERVICES

1. Background Information

IAMGOLD is a mid-tier mining company with three operating gold mines in three continents, including the the Rosebel mine in Suriname-South America. IAMGOLD- Rosebel Gold Mines N.V. is an Environment Health & Safety certified company and has the vision of ZERO harm.

Falls – Lifting & Rigging are the leading causes of work-related injuries, accounting for one-third of on-the-job deaths in the mining and construction industry.

Inspection Personal Fall Arrest Equipment – Ladders:

Whether from heavy usage or exposure to harsh conditions, fall protection equipment and ladders can become damaged or worn to the point that it is no longer safe for use. This can include rips, tears, bent hooks and latches, corrosion or any other defects.

Inspecting the integrity and function of fall protection equipment and ladders gives you the opportunity to remove equipment that does not pass the manufacturer's testing requirements and avoid any equipment failure in the event of a fall.

Inspection hoisting rigging and lifting tools:

Rigging and lifting equipment for material handling must be in good condition to prevent incident/accidents during these activities. Thorough periodic inspection of all hoisting-rigging and lifting equipment includes rips, tears, bent hooks and latches, corrosion or any other defects to be reported and removed from service. Inspecting the integrity and function of hoisting-lifting & rigging equipment gives you the opportunity to remove equipment that does not pass the manufacturer's testing requirements and avoid any equipment failure in the event of a lift.

Rosebel is currently looking for certified inspectors for quarterly inspections of all:

- Personal Fall Arrest Equipment – Harnesses- lanyards
- Ladders – fixed; portable and mobile
- Hoisting, rigging and lifting tools;

2. Location

Location for the base of the contract will be at IAMGOLD Rosebel Gold Mines in Brokopondo.

Rosebel Gold Mines N.V. is located near the town of Brownsweg in the district Brokopondo, south of the capital Paramaribo.



Figure 1: Map of Suriname with Rosebel Gold Mines

3. Scope of Services

The inspections should be conducted on a quarterly basis and all inspections reports should be documented and equipment colour coded according the RGM safety procedures.

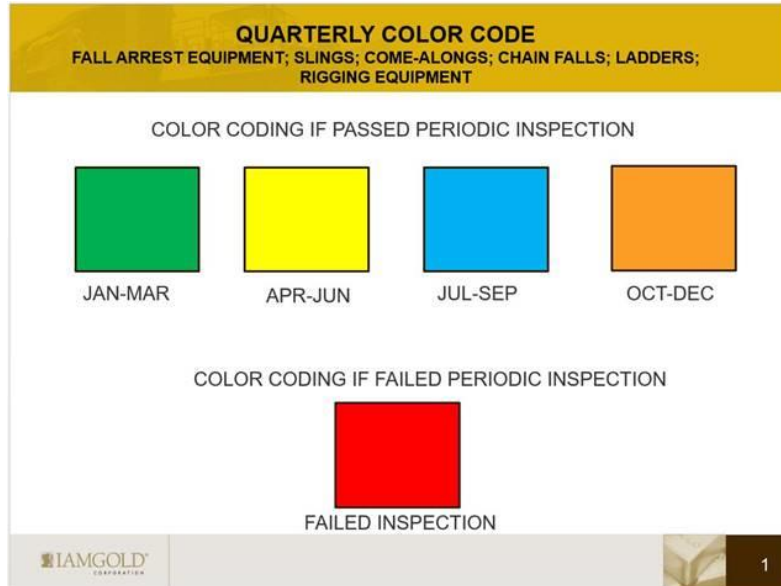


Figure 2: Quarterly colour code

4. Start date & responsible person

Start date for the inspections is: August 2021

Responsible person: Vishand Bhajan – Health & Safety Superintendent

Email: Vishand_bhajan@iamgold.com

5. Responsibilities:

Contractor:

- Certified inspectors for the periodic inspections – certifications should be send with proposals
- Conduct quarterly inspection on all required equipment and place inspection tags according RGM colour coding procedure
- Remove all equipment that failed the inspection and report to end-user department
- Submit inspection report to Health & Safety department within 7 days following each quarterly inspection
- The language used for reporting is English

Rosebel Gold mines:

- Have all required equipment available for inspection
- Mine site has estimated :300 Personal Fall Arrest Equipment; 100 ladders; 1300 hoisting and rigging tools
- Remove and dispose of failed equipment

6. Health & Safety requirements

Below are requirement that contractors working at Rosebel Gold Mines must adhered to.

- Contractor will abide by all applicable Rosebel policies, most notably the Occupational Health, Safety & Environment Policy and Procedures (including any measures related to COVID-19 prevention);
- Contractor will abide by Surinamese laws and regulations;
- Police clearance should be provided for all contractor's working on site;
- Medical screening from HCCO - Human Capital Care Outsourcing should be provided for all contractor's working on site.
- Proof of SOR insurance (original name list from the insurance company).
- All contractors will receive the RGM site induction.
- Valid defensive driving license for driving on site

7. Facilities to be provided by RGM

- Boarding and lodging (Accommodations) will be provided. Contractor to abide by all COVID-19 measures that are in place.
- Fuel will be provided to the contractor

8. Facilities and material to be provided by the Contractor

Contractor personnel should provide:

- Personal Protective Equipment (PPE).
- Personal Security boots.
- Security vest with reflective vest, hard hat
- Face mask; sanitizers

9. Request for Proposal

Supplier should submit a fixed amount for the quarterly inspections.

CONCLUSION NOTES

It should be understood that the quantities of the equipment to be inspected are estimated to the best of RGM knowledge. A site visit can be arranged to have a proper estimation of all the equipment around the mine site.