

SCOPE OF SERVICES

Ditch maintenance Mayo pit, Royal Hill North Pit and Royal Hill South Pit

1. Background information

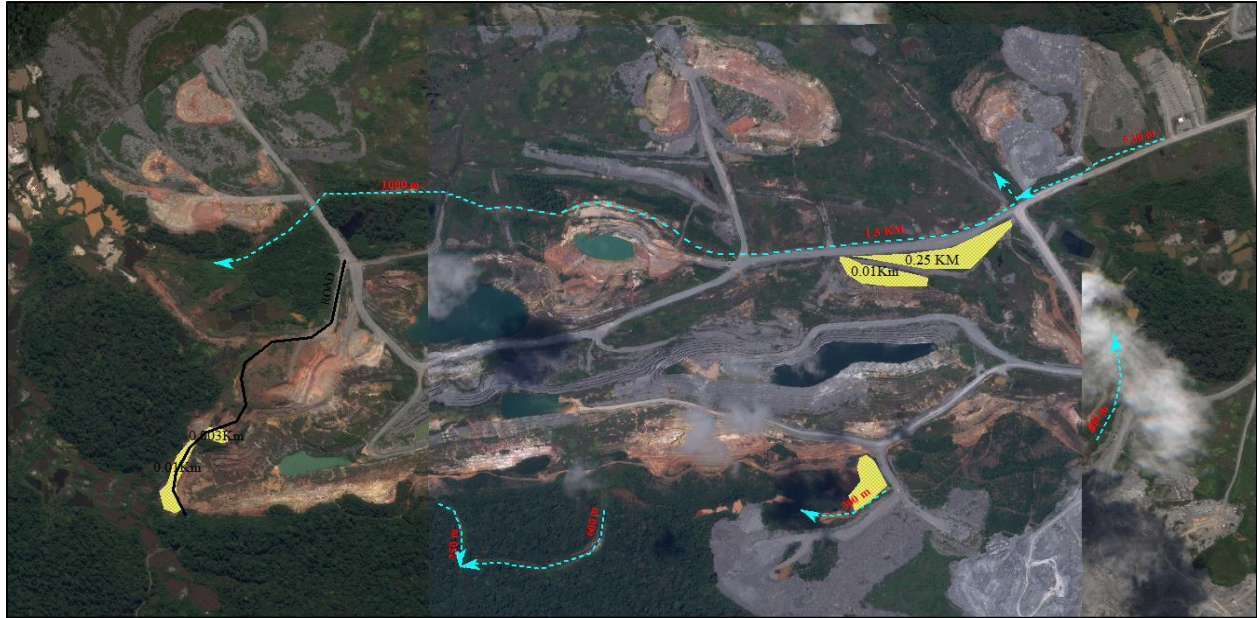
Equipment is currently being rented on adhoc basis for bush clearing activities and ditch maintenance. Availability in many cases is low. For continuity, availability and reduction in monthly rental costs, there is a need for a dedicated fleet for ditch maintenance activities and regular clearing around the RGM mine site.

2. Scope of service

2.1 Description of Assignment and Specific work

- Contractor shall provide specified equipment complete with operator for ditch maintenance activities
- All equipment delivered shall comply with requirements outlined in the RGM Mobile Equipment Procedure
- Contractor is responsible for all maintenance, repairs and any other costs associated with the Equipment and personnel.

- Mayo



Number	Requirements
1D	Ditch L=2,500 m, requires minimal maintenance
2D,4D, 5D &6D	Ditches; L=250 m, L=600 m, L=300 m & L=400 m) requires minimal maintenance. Maintenance should be conducted as per Ground control recommendation
3D	Ditch L=550 m, requires minimal maintenance
1RD	L= 2,700 m of secondary roadway that requires routine maintenance and also additional grading needed
1R,2R,3R,4R &5R	Regularly maintenance required of existing backfill area to maintain gradient as per Ground Control recommendation. (1R=0.01Km, 2R=0.025Km, 3R=0.003Km, 4R= 0.01Km & 5R=0.01Km)
Piezometer	Periodic road maintenance to existing piezometers is required and bush cutting around the pad

- Royal Hill South / North



Number	Requirements							
1D	Low to moderate maintenance ditch, L=300 m							
2D	Moderate maintenance ditch, L=630 m.							
3D	Low to moderate maintenance ditch, L=700 m							
4D	Low maintenance ditch, L=300 m.							
1R,2R,3R &4R	Regularly maintenance required of existing backfill area to maintain gradient (R1=0.02Km, R2=0.003Km, R3=0.005Km& R4=0.008Km)							
Piezometer	Periodic road maintenance to existing piezometers is required and bush cutting around the pad							

2.2 Responsible department

- Engineering Department
- Environmental Department
- Mine Service Department for Supervision and coordination. - Health & Safety

2.3 General Requirements

- Contractor will abide by Surinamese laws and regulations, including any new regulations that will apply to contractors.
- Contractor will abide by all applicable Rosebel policies, most notably the Mobile equipment Environment and Occupational Health, Safety & Environment Policy and Procedures.
- Policed clearance is required for all contractor's working on site
- Contractor to have medical screening done for all workers at HCCO - Human Capital Care Outsourcing
- Proof of SOR insurance for all contractors working on site

2.4 Start date & period of implementation

Initial service agreement will be 1 year.

2.5 Facilities to be provided by RGM

- Meals and accommodation for operators
- Transportation to and from work site
- Assistant and instruction regarding Safety and Policy's
- Fuel

2.6 Facilities to be provided by Contractor

- Safety procedures
- Operators
- Equipment
- Maintenance personnel

- All PPE

2.7 Monitoring & Evaluation

Performance will be measured by monthly rental equipment and production availability KPIs. Equipment and production availability should be minimum 85%.

3. EQUIPMENT & PRICING

Pricing to be provided for the following equipment or equivalent. Rates includes labor, maintenance and all other associated costs.

Equipment Description	Duration/Frequency
Dozer	Monthly
Excavator	Monthly

Bill of Quantities

The costs should be broken down into components with a full description of each component and its associated costs.

#	Item Description	Unit	QTY	Rate	Total	Comment
1	Place and Shape Material	m ³				
2	Placing (levelling, compacting, grading)	m ²				